

Bannerman Values and Gem Power



Respect



Ruby

We respect each other.

- ◇ Be kind ◇ Be polite ◇ Be helpful

Resilience



Emerald

We embrace challenge.

- ◇ Be confident ◇ Be brave ◇ Be calm

Responsibility



Sapphire

We do our best, manage our distractions and make good choices.

- ◇ Be ambitious ◇ Be focused ◇ Be proud

Curiosity

We question and have open minds and are enthusiastic learners.

- ◇ Explore ◇ Be creative ◇ Be inquisitive

Diamond

Collaboration



Amethyst

We enjoy learning together, ensuring everyone plays a part.

- ◇ Listen ◇ Be involved ◇ Be supportive



BANNERMAN ROAD COMMUNITY ACADEMY

Key Information:

Child's name.....

Class

Teacher.....

School day starts

School day ends.....

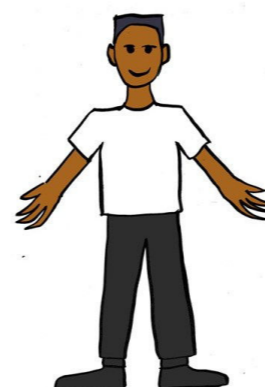
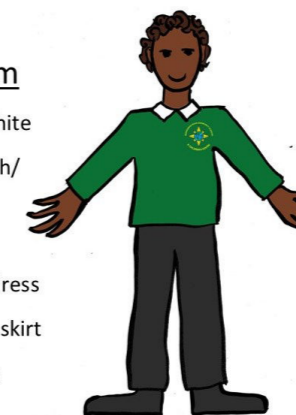
Forest School Mon Tues Wed Thurs Fri

PE day Mon Tues Wed Thurs Fri



School Uniform

- Hijab plain black or white
- Green sweatshirt with/without logo
- White polo shirt
- Green check summer dress
- Black trousers or black skirt
- Black school shoes



PE/forest school

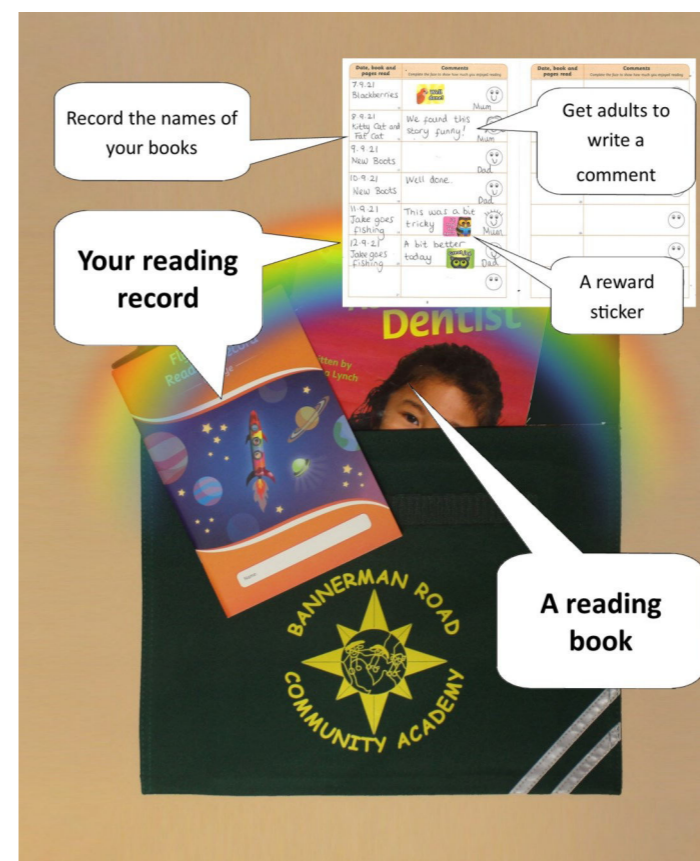
Clothes

- Hijab plain black or white
- School sweatshirt with logo
- White or green t-shirt
- Black trousers or black skirt
- Black trainers



Regular Reading practice at home is key to building up children's reading skills. Please use your

Bannerman Book Bag!



What happens next?

- You will be set up with a Parent Pay account so you can pay for trips and school dinners if your child is in KS2. You will be informed when this account is ready to use.
- We plan to check to see if your child qualifies for free school meals and extra, Pupil Premium funding.
- We ask you to inform us if any of your contact details change at once.

You have been given this information by

Date: